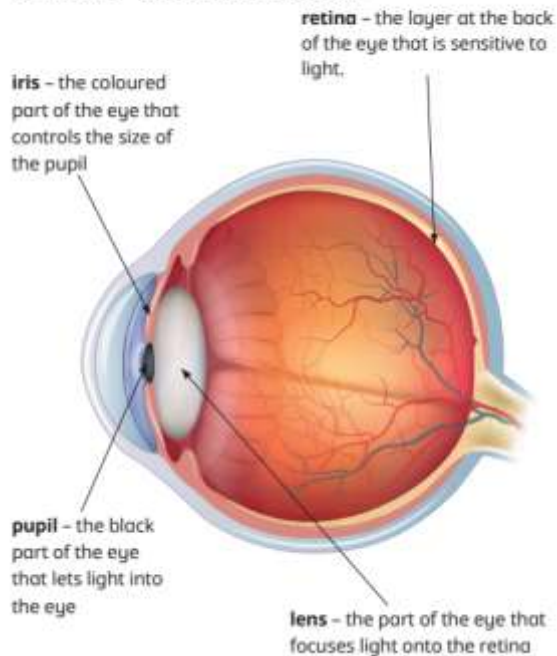


# Light



## Key vocabulary

- **light source** – object that produces light



## Key vocabulary

- **shadow** – a dark area caused by an object blocking a source of light



- **opaque** – an object or material that does not allow any light to pass through it



- **translucent** – an object or material that allows some light to pass through it



- **transparent** – an object or material that allows all light to pass through it



- **solar eclipse** – when the Moon passes between the Earth and the Sun and blocks the sunlight from reaching the Earth. This casts a shadow of the Moon on the Earth

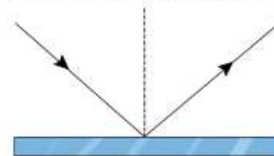


## Key vocabulary

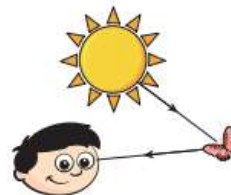
- **light source** – object that produces light



- **reflection** – when light bounces off an object



- **ray diagram** – a diagram that shows how light travels



- **angle** – where two lines meet at a point



- **periscope** – an instrument that uses mirrors to make objects visible around barriers

## Key questions

- How does light travel?
- What does transparent/translucent/opaque mean?
- What is a shadow?
- What causes a shadow to form?
- Are there objects that don't create shadows? Why?
- Can shadows have different colours? Why/why not?
- How does the shape of an object affect the shape of its shadow?